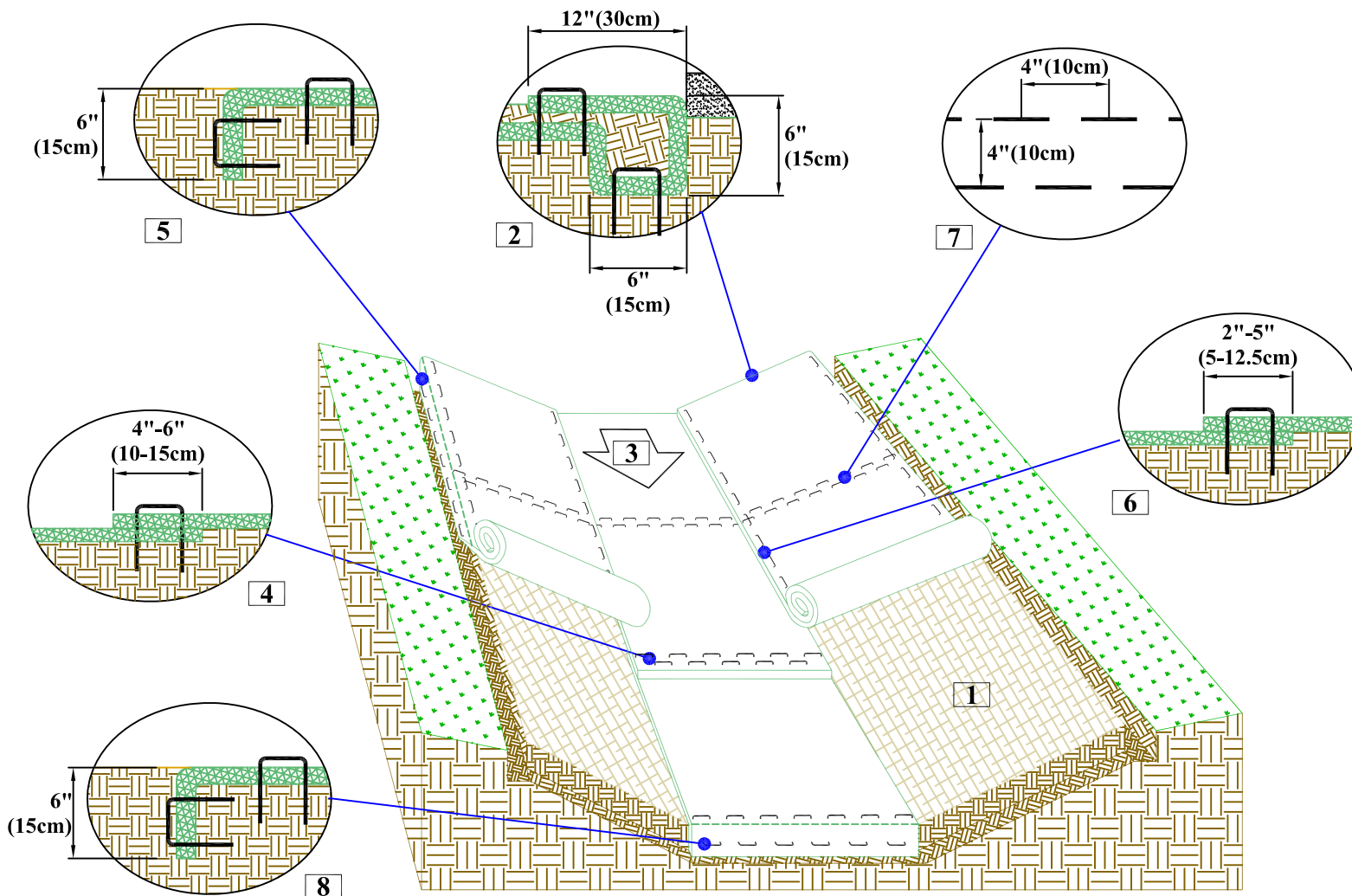
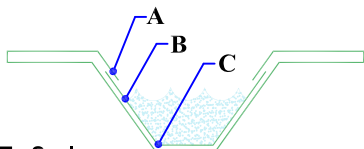


# CHANNEL INSTALLATION DETAIL



## CRITICAL POINTS

- A. Overlaps and Seams
- B. Projected Water Line
- C. Channel Bottom/Side Slope Vertices



Drawing Not To Scale

## NOTES:

\*Horizontal staple spacing should be altered if necessary to allow staples to secure the critical points along the channel surface.

\*\*In loose soil conditions, the use of staple or stake lengths greater than 6" (15cm) may be necessary to properly secure the RECP's.

1. Prepare soil before installing rolled erosion control products (RECPs), including any necessary application of lime, fertilizer, and seed.
2. Begin at the top of the channel by anchoring the RECPs in a 6" (15cm) deep X 6" (15cm) wide trench with approximately 12" (30cm) of RECPs extended beyond the up-slope portion of the trench. Use ShoreMax mat at the channel/culvert outlet as supplemental scour protection as needed. Anchor the RECPs with a row of staples/stakes approximately 12" (30cm) apart in the bottom of the trench. Backfill and compact the trench after stapling. Apply seed to the compacted soil and fold the remaining 12" (30cm) portion of RECPs back over the seed and compacted soil. Secure RECPs over compacted soil with a row of staples/stakes spaced approximately 12" apart across the width of the RECPs.
3. Roll center RECPs in direction of water flow in bottom of channel. RECPs will unroll with appropriate side against the soil surface. All RECPs must be securely fastened to soil surface by placing staples/stakes in appropriate locations as shown in the staple pattern guide.
4. Place consecutive RECPs end-over-end (Shingle style) with a 4"-6" overlap. Use a double row of staples staggered 4" apart and 4" on center to secure RECPs.
5. Full length edge of RECPs at top of side slopes must be anchored with a row of staples/stakes approximately 12" (30cm) apart in a 6" (15cm) deep X 6" (15cm) wide trench. Backfill and compact the trench after stapling.
6. Adjacent RECPs must be overlapped approximately 2"-5" (5-12.5cm) (Depending on RECPs type) and stapled.
7. In high flow channel applications a staple check slot is recommended at 30 to 40 foot (9 -12m) intervals. Use a double row of staples staggered 4" (10cm) apart and 4" (10cm) on center over entire width of the channel.
8. The terminal end of the RECPs must be anchored with a row of staples/stakes approximately 12" (30cm) apart in a 6" (15cm) deep X 6" (15cm) wide trench. Backfill and compact the trench after stapling.

**Tensar**

**NORTH  
AMERICAN  
GREEN®**

5401 St. Wendel - Cynthiana Rd.  
Poseyville, IN 47633

PH: 800-722-2040  
www.nagreen.com

## Disclaimer:

The information presented herein is general design information only. For specific applications, consult an independent professional for further design guidance.

Drawn on: 3-16-11